



**OAKWOOD PRIMARY ACADEMY
SAFEGUARDING POLICY & CHILD PROTECTION
POLICY**

Approved and Signed by The Board of Trustees

26.09.22

(Updated 09.02.23 & 10.05.23)

SEPTEMBER 2022

DUE FOR RENEWAL: SEPTEMBER 2023

Contents

Important contacts.....	2
1. Aims.....	3
2. Legislation and statutory guidance	3
3. Definitions.....	5
4. Equality statement	5
5. Roles and responsibilities.....	6
6. Confidentiality.....	7
7. Recognising abuse and taking action	8
8. Notifying parents or carers.....	16
9. Pupils with special educational needs and disabilities or health issues	17
10. Pupils with a social worker	17
11. Looked-after and previously looked-after children.....	17
12. Online safety and the use of mobile technology	18
13. Complaints and concerns about school safeguarding policies.....	19
14. Record-keeping.....	20
15. Training	20
16. Monitoring arrangements.....	21
17. Links with other policies.....	21
Appendix 1: types of abuse	23
Appendix 2: safer recruitment and DBS checks – policy and procedures.....	24
Appendix 3: allegations of abuse made against staff.....	29
Appendix 4: specific safeguarding issues	34

Important contacts

ROLE/ORGANISATION	NAME	CONTACT DETAILS
Designated safeguarding lead (DSL)	Katie Hammond	01752 775478
Deputy DSL	Colin Randall	01752 775478
Local authority designated officer (LADO)	Steve Jones PLP LA LADO Marie Partridge	01752 788076
Chair of Trustees	Julia Guy	07850 641004
Channel helpline		020 7340 7264

I. Aims

The school aims to ensure that:

Appropriate action is taken in a timely manner to safeguard and promote children's welfare

All staff are aware of their statutory responsibilities with respect to safeguarding

Staff are properly trained in recognising and reporting safeguarding issues

There is a zero-tolerance approach to abuse and staff are clear about the important role they play in preventing abuse

2. Legislation and statutory guidance

This policy is based on the Department for Education's statutory guidance [Keeping Children Safe in Education \(2022\)](#), [Working Together to Safeguard Children \(2018\) \(and 2020 update\)](#) and the [Governance Handbook](#). We comply with this guidance and the arrangements agreed and published by our 3 local safeguarding partners.

This policy is also based on the following legislation:

Part 3 of the schedule to the [Education \(Independent School Standards\) Regulations 2014](#), which places a duty on academies and independent schools to safeguard and promote the welfare of pupils at the school

[The Children Act 1989](#) (and [2004 amendment](#)), which provides a framework for the care and protection of children

Section 5B(11) of the Female Genital Mutilation Act 2003, as inserted by section 74 of the [Serious Crime Act 2015](#), which places a statutory duty on teachers to report to the police where they discover that female genital mutilation (FGM) appears to have been carried out on a girl under 18

[Statutory guidance on FGM](#), which sets out responsibilities with regards to safeguarding and supporting girls affected by FGM

[The Rehabilitation of Offenders Act 1974](#), which outlines when people with criminal convictions can work with children

Schedule 4 of the [Safeguarding Vulnerable Groups Act 2006](#), which defines what 'regulated activity' is in relation to children

[Statutory guidance on the Prevent duty](#), which explains schools' duties under the Counter-Terrorism and Security Act 2015 with respect to protecting people from the risk of radicalisation and extremism

The [Childcare \(Disqualification\) and Childcare \(Early Years Provision Free of Charge\) \(Extended Entitlement\) \(Amendment\) Regulations 2018](#) (referred to in this policy as the "2018 Childcare Disqualification Regulations") and [Childcare Act 2006](#), which set out who is disqualified from working with children

This policy also meets requirements relating to safeguarding and welfare in the [statutory framework for the Early Years Foundation Stage](#).

This policy also complies with our funding agreement and articles of association.

Our school procedures for safeguarding children will be in line with the Plymouth Safeguarding Children Board (PSCB) Multi Agency Child Protection Procedures (www.swcpp.org.uk).

We will ensure that:

- the Board of Trustees understands and fulfils its safeguarding responsibilities;
- there is a Designated Safeguarding Lead and a Deputy Designated Safeguarding Lead, who have undertaken role specific training, and also multi agency Child Protection Awareness Training, delivered through the PSCB. Both staff members will undertake other training as recommended by the PSCB every two years;
- all staff will receive appropriate safeguarding and child protection training in order to develop their understanding of child protection and, in particular, the signs and indicators of abuse, that is regularly updated (at least every three years). In addition, all staff will receive safeguarding and child protection updates (for example via email, e-bulletins and staff meetings), as required, but at least annually, to provide them with relevant skills and knowledge to safeguard children effectively;
- all staff will receive training on preventing radicalisation and extremism as part of the PREVENT duty;
- all staff are aware of the early help process, and understand their role in it. This includes identifying emerging problems, liaising with the Designated Safeguarding Lead, sharing information with other professionals to support early identification and assessment, and in some cases, acting as the lead professional in undertaking an early help assessment;
- all staff are aware of the process for making referrals to Children, Young People and Families Services and for statutory assessments under the Children Act 1989, that may follow a referral, along with the role they may be expected to play in such assessments;
- all staff know how to respond to a pupil who discloses abuse, and the procedure to be followed in sharing, appropriately, a concern of possible abuse or a disclosure of abuse;
- all parents are made aware of the school's responsibilities in regard to child protection procedures, through publication of the school's Child Protection and Safeguarding Policy, and we will make reference to it in our prospectus/brochure and home school agreement;
- our lettings policy will seek to ensure the suitability of adults working with children on school sites at any time;
- community users organising activities for children are aware of and understand the need for compliance with the school's child protection guidelines and procedures;
- our recruitment and selection policy/code of practice includes all appropriate checks on staff suitability including Disclosure and Barring Service checks. A minimum of two individuals have completed Safer Recruitment Training (e.g. Head of School/Senior Head of School, Member of School Leadership Team or a nominated Governor) and we will ensure that at least one trained individual participates in all recruitment within the school;
- the name of any member of staff considered not suitable to work with children (and the rationale for this decision) will be notified to the Disclosure and Barring Service and/or the relevant Government Department/Agency (where appropriate), depending on the nature of the concern, with the advice and support of the school's Human Resources Provider and/or the Local Authority Designated Officer;
- all relevant staff, visiting officers etc. have been vetted in accordance with the 'Childcare Disqualification Requirements' and 'Disqualification by Association' statutory guidance, and been deemed suitable for working with the relevant age range of children within the school;
- the name of the Designated Safeguarding Lead, Deputy Designated Safeguarding Lead and Nominated Safeguarding Governor will be clearly displayed in the school and on our website, with a statement explaining the school's role in referring and monitoring cases of suspected abuse;
- all staff (including those from a supply agency) new to our school, will be given or directed to a copy of the Child Protection and Safeguarding Policy, the booklet "What To Do if You're Worried A Child is Being Abused", and the name and contact details of the Designated Safeguarding Lead will be explained as part of their induction into the school. In addition, all such staff will be made aware of the 'Guidance for Safer Working Practice for Adults who work with Children and Young People', available for reference within the school;
- our child protection procedures will be reviewed annually and up-dated as necessary.

3. Definitions

Safeguarding and promoting the welfare of children means:

Protecting children from maltreatment

Preventing impairment of children's mental and physical health or development

Ensuring that children grow up in circumstances consistent with the provision of safe and effective care

Taking action to enable all children to have the best outcomes

Child protection is part of this definition and refers to activities undertaken to prevent children suffering, or being likely to suffer, significant harm.

Abuse is a form of maltreatment of a child, and may involve inflicting harm or failing to act to prevent harm. Appendix I explains the different types of abuse.

Neglect is a form of abuse and is the persistent failure to meet a child's basic physical and/or psychological needs, likely to result in the serious impairment of the child's health or development. Appendix I defines neglect in more detail.

Sexting (also known as youth produced sexual imagery) is the sharing of sexual imagery (photos or videos) by children

Children includes everyone under the age of 18.

The following 3 **safeguarding partners** are identified in Keeping Children Safe in Education (and defined in the Children Act 2004, as amended by chapter 2 of the Children and Social Work Act 2017). They will make arrangements to work together to safeguard and promote the welfare of local children, including identifying and responding to their needs:

The local authority (LA)

A clinical commissioning group for an area within the LA

The chief officer of police for a police area in the LA area

4. Equality statement

Some children have an increased risk of abuse, and additional barriers can exist for some children with respect to recognising or disclosing it. We are committed to anti-discriminatory practice and recognise children's diverse circumstances. We ensure that all children have the same protection, regardless of any barriers they may face.

We give special consideration to children who:

Have special educational needs (SEN) or disabilities (see section 9)

Certain medical or physical health conditions

Are young carers

May experience discrimination due to their race, ethnicity, religion, gender identification or sexuality

Have English as an additional language

Are known to be living in difficult situations – for example, temporary accommodation or where there are issues such as substance abuse or domestic violence

Are at risk of FGM, sexual exploitation, forced marriage, or radicalisation

Are asylum seekers

Are at risk due to either their own or a family member's mental health needs

Are looked after or previously looked after (see section 11)

5. Roles and responsibilities

Safeguarding and child protection is **everyone's** responsibility and we have a zero-tolerance approach to abuse which ensures staff are clear about the important role they play in preventing abuse. This policy applies to all staff, volunteers and governors in the school and is consistent with the procedures of the 3 safeguarding partners. Our policy and procedures also apply to extended school and off-site activities.

5.1 All staff

All staff will read and understand part 1 and Annex A of the Department for Education's statutory safeguarding guidance, [Keeping Children Safe in Education](#), and review this guidance at least annually.

All staff will be aware of:

Our systems which support safeguarding, including this Safeguarding Policy and Child Protection Policy, the Managing and Supporting Positive Behaviour Policy and the Code of Conduct for School Staff Policy, the role and identity of the designated safeguarding lead (DSL) and deputy and the safeguarding response to children who go missing from education

The early help process (sometimes known as the common assessment framework) and their role in it, including identifying emerging problems, liaising with the DSL, and sharing information with other professionals to support early identification and assessment

The process for making referrals to local authority children's social care and for statutory assessments that may follow a referral, including the role they might be expected to play

What to do if they identify a safeguarding issue or a child tells them they are being abused or neglected, including specific issues such as FGM, and how to maintain an appropriate level of confidentiality while liaising with relevant professionals

The signs of different types of abuse and neglect, as well as specific safeguarding issues, such as child sexual exploitation (CSE), indicators of being at risk from or involved with serious violent crime, FGM and radicalisation

Section 15 and appendix 4 of this policy outline in more detail how staff are supported to do this.

5.2 The designated safeguarding lead (DSL)

The DSL is a member of the senior leadership team. Our DSL is Katie Hammond, Head of School. The DSL takes lead responsibility for child protection and wider safeguarding.

During term time, the DSL will be available during school hours for staff to discuss any safeguarding concerns.

The DSL can be contacted out of school hours via email on k.hammond@discoverymat.co.uk.

When the DSL is absent, the deputy, Colin Randall, Assistant Head of School – will act as cover.

If the DSL and deputy are not available, a member of the senior leadership team will act as cover (for example, during out-of-hours/out-of-term activities).

The DSL will be given the time, funding, training, resources and support to:

Provide advice and support to other staff on child welfare and child protection matters

Take part in strategy discussions and inter-agency meetings and/or support other staff to do so

Contribute to the assessment of children

Refer suspected cases, as appropriate, to the relevant body (local authority children's social care, Channel programme, Disclosure and Barring Service, and/or police), and support staff who make such referrals directly

The DSL will also keep the Head of School/Senior Head of School informed of any issues, and liaise with local authority case managers and designated officers for child protection concerns as appropriate.

The full responsibilities of the DSL and deputy are set out in their job description.

5.3 The Board of Trustees

The Trustees will approve this policy at each review, ensure it complies with the law and hold the Head of School/Senior Head of School to account for its implementation.

The Trustees will appoint a senior board level (or equivalent) lead to monitor the effectiveness of this policy in conjunction with the full Trustees board. This is always a different person from the DSL. The designated contact for the school is Alison Nettleship, CEO Discovery MAT.

The Trustees will act as the 'case manager' in the event that an allegation of abuse is made against the Head of School/Senior Head of School, where appropriate (see appendix 3).

All Trustees will read Keeping Children Safe in Education.

Section 15 of this policy has information on how Trustees are supported to fulfil their role.

5.4 The Head of School/Senior Head of School

The Head of School/Senior Head of School is responsible for the implementation of this policy, including:

- Ensuring that staff (including temporary staff) and volunteers are informed of our systems which support safeguarding, including this policy, as part of their induction
- Communicating this policy to parents when their child joins the school and via the school website
- Ensuring that the DSL has appropriate time, funding, training and resources, and that there is always adequate cover if the DSL is absent
- Ensuring that all staff undertake appropriate safeguarding and child protection training and update this regularly
- Acting as the 'case manager' in the event of an allegation of abuse made against another member of staff or volunteer, where appropriate (see appendix 3)
- Ensuring the relevant staffing ratios are met, where applicable
- Following the Early Years Framework and making specific safeguarding arrangements to support some of our most vulnerable pupils
- Making sure each child in the Early Years Foundation Stage is assigned a key person
- Ensuring that the use of photographic images policy is in effect
- Adults to be aware of signs of abuse that may not come from disclosures particularly for our youngest children who may not be able/ready to communicate

6. Confidentiality

We recognise that all matters relating to child protection are confidential.

The Head of School/Senior Head of School or Designated Safeguarding Lead will disclose personal information about a pupil to other members of staff on a need to know basis only.

All staff will be aware that they have a professional responsibility to share information with other agencies in order to safeguard children.

All staff will be aware that they cannot promise a child to keep secrets which might compromise the child's own safety or well-being, or that of another child.

We will always undertake to share our intention to refer a child to Children, Young People and Families Services with their parents/carers consent unless to do so could put the child at greater risk of harm, or impede a criminal investigation. If in doubt, we will consult with the Children, Young People and Families Services.

The Trust also acknowledges that:

Timely information sharing is essential to effective safeguarding

Fears about sharing information must not be allowed to stand in the way of the need to promote the welfare, and protect the safety, of children

The Data Protection Act (DPA) 2018 and GDPR do not prevent, or limit, the sharing of information for the purposes of keeping children safe

If staff need to share 'special category personal data', the DPA 2018 contains 'safeguarding of children and individuals at risk' as a processing condition that allows practitioners to share information without consent if it is not possible to gain consent, it cannot be reasonably expected that a practitioner gains consent, or if to gain consent would place a child at risk

Staff should never promise a child that they will not tell anyone about a report of abuse, as this may not be in the child's best interests

The government's [information sharing advice for safeguarding practitioners](#) includes 7 'golden rules' for sharing information, and will support staff who have to make decisions about sharing information

If staff are in any doubt about sharing information, they should speak to the designated safeguarding lead (or deputy)

Confidentiality is also addressed in this policy with respect to record-keeping in section 14, and allegations of abuse against staff in appendix 3

7. Recognising abuse and taking action

Staff, volunteers and Trustees must follow the procedures set out below in the event of a safeguarding issue.

Please note – in this and subsequent sections, you should take any references to the DSL to mean "the DSL (or deputy DSL)".

7.1 If a child is suffering or likely to suffer harm, or in immediate danger

Make a referral to children's social care and/or the police **immediately** if you believe a child is suffering or likely to suffer from harm, or in immediate danger. **Anyone can make a referral.**

Tell the DSL (see section 5.2) as soon as possible if you make a referral directly.

Please also find a link below to the GOV.UK webpage for reporting child abuse to your local council:

<https://www.gov.uk/report-child-abuse-to-local-council>

The Trust is committed to supporting children who self-harm or attempt to self-harm and our full response/commitment is laid out in a separate 'Managing Self Harm Policy' document available on the school website.

7.2 If a child makes a disclosure to you

If a child discloses a safeguarding issue to you, you should:

Listen to and believe them. Allow them time to talk freely and do not ask leading questions

Stay calm and do not show that you are shocked or upset

Tell the child they have done the right thing in telling you. Do not tell them they should have told you sooner

Explain what will happen next and that you will have to pass this information on. Do not promise to keep it a secret

Write up your conversation as soon as possible in the child's own words. Stick to the facts, and do not put your own judgement on it

Sign and date the write-up and pass it on to the DSL. Alternatively, if appropriate, make a referral to children's social care and/or the police directly (see 7.1), and tell the DSL as soon as possible that you have done so

Children may not feel ready, or know how, to tell someone they are being abused, exploited or neglected, and/or they might not recognise their experiences as harmful. Children may feel embarrassed, humiliated or threatened due to their vulnerability, disability, sexual orientation and/or language barriers. Staff should always have a 'professional curiosity' and share concerns with the DSL if necessary.

7.3 If you discover that FGM has taken place or a pupil is at risk of FGM

The Department for Education's Keeping Children Safe in Education explains that FGM comprises "all procedures involving partial or total removal of the external female genitalia, or other injury to the female genital organs".

FGM is illegal in the UK and a form of child abuse with long-lasting, harmful consequences. It is also known as 'female genital cutting', 'circumcision' or 'initiation'.

Possible indicators that a pupil has already been subjected to FGM, and factors that suggest a pupil may be at risk, are set out in appendix 4.

Any teacher who discovers (either through disclosure by the victim or visual evidence) that an act of FGM appears to have been carried out on a **pupil under 18** must immediately report this to the police, personally. This is a statutory duty, and teachers will face disciplinary sanctions for failing to meet it.

Unless they have been specifically told not to disclose, they should also discuss the case with the DSL and involve children's social care as appropriate.

Any other member of staff who discovers that an act of FGM appears to have been carried out on a **pupil under 18** must speak to the DSL and follow our local safeguarding procedures.

The duty for teachers mentioned above does not apply in cases where a pupil is *at risk* of FGM or FGM is suspected but is not known to have been carried out. Staff should not examine pupils.

Any member of staff who suspects a pupil is *at risk* of FGM or suspects that FGM has been carried out must speak to the DSL and follow our local safeguarding procedures as mentioned in section 2.

7.4 If you have concerns about a child (as opposed to believing a child is suffering or likely to suffer from harm, or is in immediate danger)

Figure 1 on page 11 illustrates the procedure to follow if you have any concerns about a child's welfare.

Where possible, speak to the DSL first to agree a course of action.

If in exceptional circumstances the DSL is not available, this should not delay appropriate action being taken. Speak to a member of the senior leadership team and/or take advice from local authority children's social

care. You can also seek advice at any time from the NSPCC helpline on 0808 800 5000. Share details of any actions you take with the DSL as soon as practically possible.

Make a referral to local authority children's social care directly, if appropriate (see 'Referral' below). Share any action taken with the DSL as soon as possible.

Early help

If early help is appropriate, the DSL will generally lead on liaising with other agencies and setting up an inter-agency assessment as appropriate. Staff may be required to support other agencies and professionals in an early help assessment, in some cases acting as the lead practitioner.

The DSL will keep the case under constant review and the school will consider a referral to local authority children's social care if the situation does not seem to be improving. Timelines of interventions will be monitored and reviewed.

Referral

If it is appropriate to refer the case to local authority children's social care or the police, the DSL will make the referral or support you to do so.

If you make a referral directly (see section 7.1), you must tell the DSL as soon as possible.

The local authority will make a decision within 1 working day of a referral about what course of action to take and will let the person who made the referral know the outcome. The DSL or person who made the referral must follow up with the local authority if this information is not made available, and ensure outcomes are properly recorded.

If the child's situation does not seem to be improving after the referral, the DSL or person who made the referral must follow local escalation procedures to ensure their concerns have been addressed and that the child's situation improves.

7.5 If you have concerns about extremism or radicalisation

If a child is not suffering or likely to suffer from harm, or in immediate danger, where possible speak to the DSL first to agree a course of action.

If in exceptional circumstances the DSL is not available, this should not delay appropriate action being taken. Speak to a member of the senior leadership team and/or seek advice from local authority children's social care. Make a referral to local authority children's social care directly, if appropriate (see 'Referral' above). Inform the DSL or deputy as soon as practically possible after the referral.

Where there is a concern, the DSL will consider the level of risk and decide which agency to make a referral to. This could include [Channel](#), the government's programme for identifying and supporting individuals at risk of being drawn into terrorism, or the local authority children's social care team.

The Department for Education also has a dedicated telephone helpline, 020 7340 7264, which school staff and governors can call to raise concerns about extremism with respect to a pupil. You can also email counter.extremism@education.gov.uk. Note that this is not for use in emergency situations.

In an emergency, call 999 or the confidential anti-terrorist hotline on 0800 789 321 if you:

Think someone is in immediate danger

Think someone may be planning to travel to join an extremist group

See or hear something that may be terrorist-related

7.6 If you have a mental health concern

Mental health problems can, in some cases, be an indicator that a child has suffered or is at risk of suffering abuse, neglect or exploitation.

Staff will be alert to behavioural signs that suggest a child may be experiencing a mental health problem or be at risk of developing one.

If you have a mental health concern about a child that is also a safeguarding concern, take immediate action by following the steps in section 7.4. The Mental Health and Wellbeing Policy also contains information about supporting these pupils.

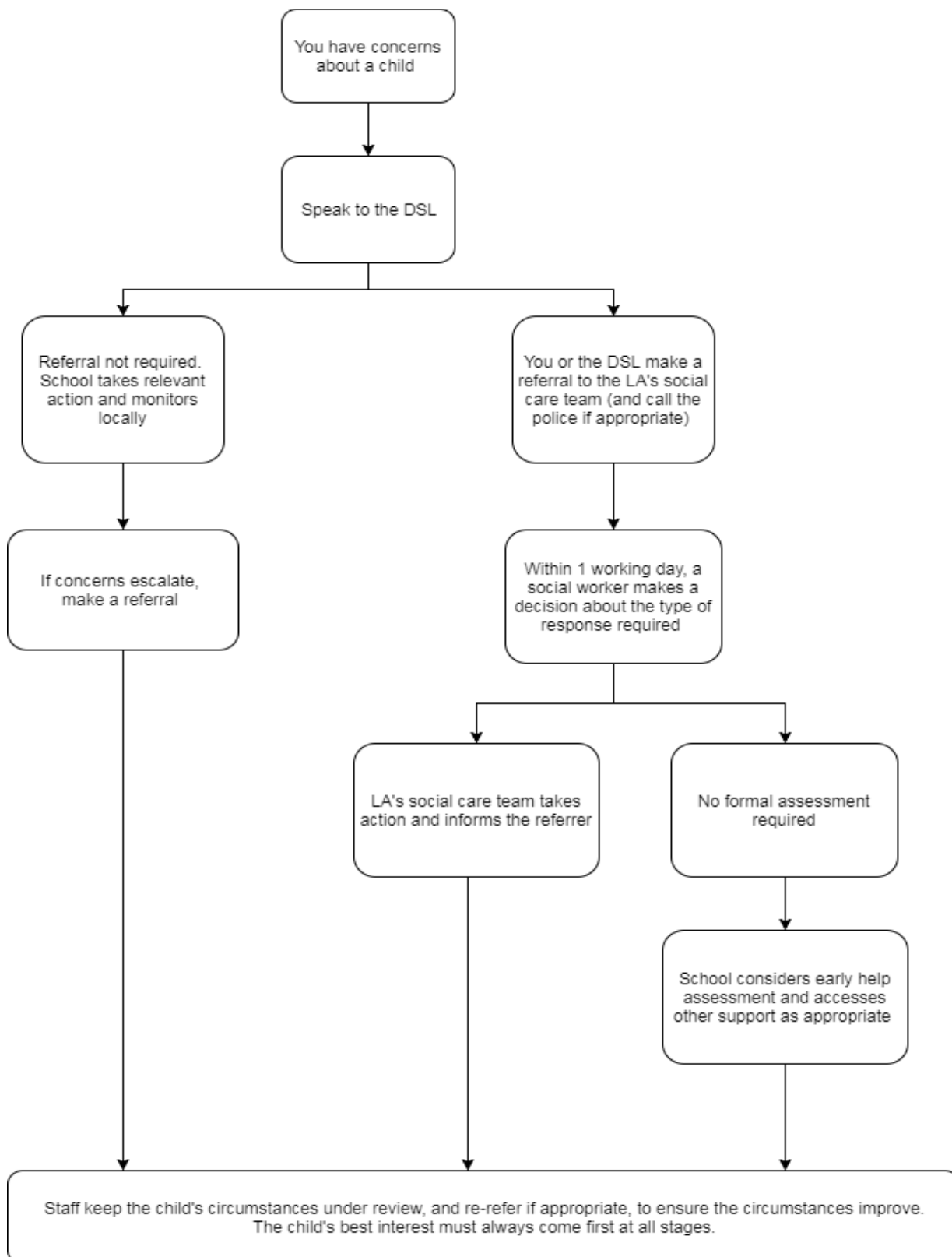
If you have a mental health concern that is **not** also a safeguarding concern, speak to the DSL to agree a course of action.

The Trust is committed to supporting children with mental health problems and our full response/commitment is laid out in a separate 'Mental Health and Wellbeing Policy' document available on the school website.

You may also refer to the Department for Education guidance on [mental health and behaviour in schools](#) for more information.

Figure 1: procedure if you have concerns about a child's welfare (as opposed to believing a child is suffering or likely to suffer from harm, or in immediate danger)

(Note – if the DSL is unavailable, this should not delay action. See section 7.4 for what to do.)



7.7 Concerns (including low level concerns) about a staff member, supply teacher or volunteer

If you have concerns about a member of staff (including a supply teacher or volunteer), or an allegation is made about a member of staff (including a supply teacher or volunteer) posing a risk of harm to children, speak to the Head of School/Senior Head of School. If the concerns/allegations are about the Head of School/Senior Head of School, speak to the CEO. If the concerns/allegations are about the CEO, please speak to the Chair of Trustees. The Trust Whistleblowing policy should be read in relation to raising concerns about a member of staff. All concerns regarding staff will be shared with the CEO/Chair of Trustees and recorded confidentially on Behaviour Watch. As concerns recorded on Behaviour Watch will go straight to the CEO if the concerns are regarding the CEO the member of staff should contact the Chair of Trustees by other means (email, phone).

It is vital that any concerns should be raised. A low-level concern is any concern, no matter how small, and even if no more than causing a sense of unease or a 'nagging doubt' that an adult working on or on behalf of the school may have acted in a way that is inconsistent with our code of conduct. This could include inappropriate behaviour outside of work.

A low-level concern may not meet the 'harm threshold' for referral to the Local Authority Designated Officer. However, examples of low-level behaviour would include, but is not limited to:

- Being over friendly with children
- Having favourites
- Taking photographs of a child on a personal mobile phone
- Engaging with a child on a one-to-one basis in a secluded area
- Humiliating the individual [Keeping Children Safe in Education 2022]

The Head of School/Senior Head of School/Chair of Trustees will then follow the procedures set out in appendix 3, if appropriate.

Where appropriate, the school will inform the LADO and if necessary Ofsted of the allegation and actions taken, within the necessary timescale (see appendix 3 for more detail).

7.8 Allegations of abuse made against other pupils

We recognise that children are capable of abusing another child (child-on-child). Abuse will never be tolerated or passed off as "banter", "just having a laugh" or "part of growing up".

We also recognise the gendered nature of child-on-child abuse. However, all child-on-child abuse is unacceptable and will be taken seriously.

Most cases of pupils hurting other pupils will be dealt with under our school's behaviour policy, but this safeguarding policy and child protection policy will apply to any allegations that raise safeguarding concerns. This might include where the alleged behaviour:

Is serious, and potentially a criminal offence

Could put pupils in the school at risk

Is violent

Involves pupils being forced to use drugs or alcohol

Involves sexual exploitation, sexual abuse or sexual harassment, such as indecent exposure, sexual assault, upskirting or sexually inappropriate pictures or videos (including the sharing of nudes and semi nudes)

See appendix 4 for more information about child-on-child abuse.

Procedures for dealing with allegations of child-on-child abuse

If a pupil makes an allegation of abuse against another pupil:

You must record the allegation and tell the DSL, but do not investigate it

The DSL will contact the local authority children's social care team and follow its advice, as well as the police if the allegation involves a potential criminal offence

The DSL will put a risk assessment and support plan into place for all children involved (including the victim(s), the child(ren) against whom the allegation has been made and any others affected) with a named person they can talk to if needed

The DSL will contact the children and adolescent mental health services (CAMHS), if appropriate

Creating a supportive environment in school and minimising the risk of child-on-child abuse

We recognise the importance of taking proactive action to minimise the risk of child-on-child abuse, and of creating a supportive environment where victims feel confident in reporting incidents.

To achieve this, we will:

Challenge any form of derogatory or sexualised/humiliating language or behaviour between children (child-on-child), including requesting or sending sexual images

Being vigilant to issues that particularly affect different genders – for example, sexualised or aggressive touching or grabbing towards female pupils, and initiation or hazing type violence with respect to boys

Ensuring our curriculum helps to educate pupils about appropriate behaviour and consent

Ensuring pupils know they can talk to staff confidentially. The school uses lessons and assemblies to help children understand, in an age appropriate way, what child on child abuse is and we will encourage them to tell a trusted adult if someone is behaving in a way that makes them feel uncomfortable

Ensure staff reassure victims that they are being taken seriously

Ensuring staff are trained to understand:

- How to recognise the indicators and signs of child-on-child abuse, and know how to identify it and respond to reports
- That even if there are no reports of child-on-child abuse in school, it does not mean it is not happening – staff should maintain an attitude of “it could happen here”
- That if they have any concerns about a child's welfare, they should act on them immediately rather than wait to be told, and that victims may not always make a direct report. For example:
 - Children can show signs or act in ways they hope adults will notice and react to
 - A friend may make a report
 - A member of staff may overhear a conversation
 - A child's behaviour might indicate that something is wrong
- That certain children may face additional barriers to telling someone because of their vulnerability, disability, gender, ethnicity and/or sexual orientation
- That a pupil harming a child could be a sign that the child is being abused themselves, and that this would fall under the scope of this policy

- The important role they have to play in preventing child-on-child abuse and responding where they believe a child may be at risk from it
- That they should speak to the DSL if they have any concerns

7.9 Sharing of nudes and semi nudes ('sexting')

Your responsibilities when responding to an incident

If you are made aware of an incident involving sexting (also known as 'youth produced sexual imagery'), you must report it to the DSL immediately.

You must **not**:

View, download or share the imagery yourself, or ask a pupil to share or download it. If you have already viewed the imagery by accident, you must report this to the DSL

Delete the imagery or ask the pupil to delete it

Ask the pupil(s) who are involved in the incident to disclose information regarding the imagery (this is the DSL's responsibility)

Share information about the incident with other members of staff, the pupil(s) it involves or their, or other, parents and/or carers

Say or do anything to blame or shame any young people involved

You should explain that you need to report the incident, and reassure the pupil(s) that they will receive support and help from the DSL.

Initial review meeting

Following a report of an incident, the DSL will hold an initial review meeting with appropriate school staff. This meeting will consider the initial evidence and aim to determine:

Whether there is an immediate risk to pupil(s)

If a referral needs to be made to the police and/or children's social care

If it is necessary to view the imagery in order to safeguard the young person (in most cases, imagery should not be viewed)

What further information is required to decide on the best response

Whether the imagery has been shared widely and via what services and/or platforms (this may be unknown)

Whether immediate action should be taken to delete or remove images from devices or online services

Any relevant facts about the pupils involved which would influence risk assessment

If there is a need to contact another school, college, setting or individual

Whether to contact parents or carers of the pupils involved (in most cases parents should be involved)

The DSL will make an immediate referral to police and/or children's social care if:

The incident involves an adult

There is reason to believe that a young person has been coerced, blackmailed or groomed, or if there are concerns about their capacity to consent (for example owing to special educational needs)

What the DSL knows about the imagery suggests the content depicts sexual acts which are unusual for the young person's developmental stage, or are violent

The imagery involves sexual acts and any pupil in the imagery is under 13

The DSL has reason to believe a pupil is at immediate risk of harm owing to the sharing of the imagery (for example, the young person is presenting as suicidal or self-harming)

If none of the above apply then the DSL, in consultation with the Head of School/Senior Head of School and other members of staff as appropriate, may decide to respond to the incident without involving the police or children's social care.

Further review by the DSL

If at the initial review stage a decision has been made not to refer to police and/or children's social care, the DSL will conduct a further review.

They will hold interviews with the pupils involved (if appropriate) to establish the facts and assess the risks.

If at any point in the process there is a concern that a pupil has been harmed or is at risk of harm, a referral will be made to children's social care and/or the police immediately.

Informing parents

The DSL will inform parents at an early stage and keep them involved in the process, unless there is a good reason to believe that involving them would put the pupil at risk of harm.

Referring to the police

If it is necessary to refer an incident to the police, this will be done through dialing 101, or by contacting the local police community support officer.

Recording incidents

All sexting incidents and the decisions made in responding to them will be recorded. The record-keeping arrangements set out in section 14 of this policy also apply to recording incidents of sexting.

Curriculum coverage

Pupils are taught about the issues surrounding sexting as part of our PSHE education and computing programmes. Teaching covers the following in relation to sexting:

What it is

How it is most likely to be encountered

The consequences of requesting, forwarding or providing such images, including when it is and is not abusive

Issues of legality

The risk of damage to people's feelings and reputation

Pupils also learn the strategies and skills needed to manage:

Specific requests or pressure to provide (or forward) such images

The receipt of such images

This policy on sexting is also shared with pupils so they are aware of the processes the school will follow in the event of an incident.

8. Notifying parents or carers

Where appropriate, we will discuss any concerns about a child with the child's parents. The DSL will normally do this in the event of a suspicion or disclosure.

Other staff will only talk to parents about any such concerns following consultation with the DSL.

If we believe that notifying the parents would increase the risk to the child, we will discuss this with the local authority children's social care team before doing so.

In the case of allegations of abuse made against other children, we will normally notify the parents of all the children involved.

9. Pupils with special educational needs and disabilities

We recognise that pupils with special educational needs (SEN) and disabilities can face additional safeguarding challenges. Additional barriers can exist when recognising abuse and neglect in this group, including:

Assumptions that indicators of possible abuse such as behaviour, mood and injury relate to the child's disability without further exploration

Pupils being more prone to child group isolation than other pupils

The potential for pupils with SEN and disabilities being disproportionately impacted by behaviours such as bullying, without outwardly showing any signs

Communication barriers and difficulties in overcoming these barriers

We offer extra pastoral support for pupils with SEN and disabilities. This includes:

All schools have an inclusion co-ordinator and pastoral team who support teachers and staff in supporting these pupils. As a trauma informed organisation all staff have a high degree of training.

10. Pupils with a social worker

Pupils may need a social worker due to safeguarding or welfare needs. We recognise that a child's experiences of adversity and trauma can leave them vulnerable to further harm as well as potentially creating barriers to attendance, learning, behaviour and mental health.

The DSL and all members of staff will work with and support social workers to help protect vulnerable children.

Where we are aware that a pupil has a social worker, the DSL will always consider this fact to ensure any decisions are made in the best interests of the pupil's safety, welfare and educational outcomes. For example, it will inform decisions about:

Responding to unauthorised absence or missing education where there are known safeguarding risks

The provision of pastoral and/or academic support

11. Looked-after and previously looked-after children

We will ensure that staff have the skills, knowledge and understanding to keep looked-after children and previously looked-after children safe. In particular, we will ensure that:

Appropriate staff have relevant information about children's looked after legal status, contact arrangements with birth parents or those with parental responsibility, and care arrangements

The DSL has details of children's social workers and relevant virtual school heads

We have appointed a designated teacher, Tamsin Bailey, Assistant Head of School/Senior Head of School, who is responsible for promoting the educational achievement of looked-after children and previously looked-after children in line with [statutory guidance](#).

The designated teacher is appropriately trained and has the relevant qualifications and experience to perform the role.

As part of their role, the designated teacher will:

Work closely with the DSL to ensure that any safeguarding concerns regarding looked-after and previously looked-after children are quickly and effectively responded to

Work with virtual school heads to promote the educational achievement of looked-after and previously looked-after children, including discussing how pupil premium plus funding can be best used to support looked-after children and meet the needs identified in their personal education plans

12. Online safety and the use of mobile technology

We recognise the importance of safeguarding children from potentially harmful and inappropriate online material, and we understand that technology is a significant component in many safeguarding and wellbeing issues.

To address this, our school aims to:

- › Have robust processes in place to ensure the online safety of pupils, staff, volunteers and governors
- › Protect and educate the whole school community in its safe and responsible use of technology, including mobile and smart technology (which we refer to as 'mobile phones')
- › Set clear guidelines for the use of mobile phones for the whole school community
- › Establish clear mechanisms to identify, intervene in and escalate any incidents or concerns, where appropriate

The 4 key categories of risk

Our approach to online safety is based on addressing the following categories of risk:

- › **Content** – being exposed to illegal, inappropriate or harmful content, such as pornography, fake news, racism, misogyny, self-harm, suicide, anti-Semitism, radicalisation and extremism
- › **Contact** – being subjected to harmful online interaction with other users, such as child-to-child pressure, commercial advertising and adults posing as children or young adults with the intention to groom or exploit them for sexual, criminal, financial or other purposes
- › **Conduct** – personal online behaviour that increases the likelihood of, or causes, harm, such as making, sending and receiving explicit images (e.g. consensual and non-consensual sharing of nudes and semi-nudes and/or pornography), sharing other explicit images and online bullying; and
- › **Commerce** – risks such as online gambling, inappropriate advertising, phishing and/or financial scams

To meet our aims and address the risks above we will:

- › Educate pupils about online safety as part of our curriculum. For example:
 - The safe use of social media, the internet and technology
 - Keeping personal information private
 - How to recognise unacceptable behaviour online
 - How to report any incidents of cyber-bullying, ensuring pupils are encouraged to do so, including where they are a witness rather than a victim
- › Train staff, as part of their induction, on safe internet use and online safeguarding issues including cyber-bullying and the risks of online radicalisation. All staff members will receive refresher training at least once each academic year
- › Educate parents/carers about online safety via our website, communications sent directly to them and during parents' evenings. We will also share clear procedures with them so they know how to raise concerns about online safety

- Make sure staff are aware of any restrictions placed on them with regards to the use of their mobile phone and cameras, for example that:
 - Staff are allowed to bring their personal phones to school for their own use, but will limit such use to non-contact time when pupils are not present
 - Staff will not take pictures or recordings of pupils on their personal phones or cameras
 - School owned devices may be used by staff to take photos of school activities to be uploaded and then deleted. This is monitored by the DSL.
- Make all pupils, parents/carers, staff, volunteers and governors aware that they are expected to sign an agreement regarding the acceptable use of the internet in school, use of the school's ICT systems and use of their mobile and smart technology
- Explain the sanctions we will use if a pupil is in breach of our policies on the acceptable use of the internet and mobile phones
- Make sure all staff, pupils and parents/carers are aware that staff have the power to search pupils' phones, as set out in the [DfE's guidance on searching, screening and confiscation](#)
- Put in place robust filtering and monitoring systems to limit children's exposure to the 4 key categories of risk (described above) from the school's IT systems
- Carry out an annual review of our approach to online safety, supported by an annual risk assessment that considers and reflects the risks faced by our school community
- We will follow the General Data Protection Regulation and Data Protection Act 2018 when taking and storing photos and recordings for use in the school.

This section summarises our approach to online safety and mobile phone use. For comprehensive details about our school's policy on online safety and the use of mobile phones, please refer to the trust's E-Safety Policy.

13. Complaints and concerns about school safeguarding policies

13.1 Complaints against staff

Complaints against staff that are likely to require a child protection investigation will be handled in accordance with our procedures for dealing with allegations of abuse made against staff (see appendix 3).

13.2 Other complaints

Complaints are taken very seriously within the Trust. Our school complaints procedure is set out in a separate document 'Complaints Policy and Procedure' available on the school and MAT website.

13.3 Whistle-blowing

We recognise that children cannot be expected to raise concerns in an environment where staff fail to do so.

All staff are aware of their duty to raise concerns about the attitude or actions of colleagues or any other person working on the school site. If necessary, they should speak to the Head of School, CEO or Chair of Trustees or the Local Authority Designated Officer within Children, Young People and Families Services for further advice and guidance. Full details of the Whistleblowing Policy are available on the school and MAT website.

If staff have a low level safeguarding concern (suspicion, complaint or a disclosure) about another staff member that does not meet the harm threshold, then they should share confidentially in accordance with the Whistleblowing Policy. If the HoS is unsure if the concern meets the harm threshold then they should consult the LADO.

14. Record-keeping

We will hold records in line with our records retention schedule.

All safeguarding concerns, discussions, decisions made and the reasons for those decisions, must be recorded in writing on our Behaviour Watch system as a safeguarding concern. If you are in any doubt about whether to record something, discuss it with the DSL. If any notes are written, at the point of disclosure, once these have been added to the Behaviour Watch system they must be shredded. Confidential information and records will be held securely and are only available to those who have a right or professional need to see them.

Safeguarding records relating to individual children will be retained for a reasonable period of time after they have left the school.

If a child for whom the school has, or has had, safeguarding concerns moves to another school, the DSL will ensure that their child protection file is forwarded promptly and securely, and separately from the main pupil file. In addition, if the concerns are significant or complex, and/or social services are involved, the DSL will speak to the DSL of the receiving school and provide information to enable them to have time to make any necessary preparations to ensure the safety of the child.

Further information regarding the schools' record-keeping arrangements can be found in the 'Data Protection Policy' found on the schools and MAT websites.

Continue with:

In addition:

Appendix 2 sets out our policy on record-keeping specifically with respect to recruitment and pre-employment checks

Appendix 3 sets out our policy on record-keeping with respect to allegations of abuse made against staff

15. Training

15.1 All staff

All staff members will undertake safeguarding and child protection training at induction, including on whistle-blowing procedures, to ensure they understand the school's safeguarding systems and their responsibilities, and can identify signs of possible abuse or neglect. This training will be regularly updated and will be in line with advice from the 3 safeguarding partners (training can be online).

All staff will have training on the government's anti-radicalisation strategy, Prevent, to enable them to identify children at risk of being drawn into terrorism and to challenge extremist ideas.

Staff will also receive regular safeguarding and child protection updates (for example, through emails, e-bulletins and staff meetings) as required, but at least annually.

Contractors who are provided through a private finance initiative (PFI) or similar contract will also receive safeguarding training.

Volunteers will receive appropriate training, if applicable.

Staff are aware of the monitoring systems in place at induction – BehaviourWatch.

Staff should be aware of their obligations to under the Human Rights Act 1998, the Equality Act 2010 and the Public Sector Equality Duty (PSED paragraph 82).

15.2 The DSL and deputy

The DSL and deputy will undertake child protection and safeguarding training at least every 2 years.

In addition, they will update their knowledge and skills at regular intervals and at least annually (for example, through e-bulletins, meeting other DSLs, or taking time to read and digest safeguarding developments).

They will also undertake Prevent awareness training. They should have a good understanding of harmful sexual behaviour. They will be aware of what local specialist support is available.

Trustees need to give the DSL additional time, funding, training, resources and support needed to carry out their role.

15.3 Trustees

All Trustees receive training about safeguarding, to make sure they have the knowledge and information needed to perform their functions and understand their responsibilities.

As the chair of governors may be required to act as the 'case manager' in the event that an allegation of abuse is made against the Head of School/Senior Head of School, they receive training in managing allegations for this purpose.

15.4 Recruitment – interview panels

At least one person conducting any interview for a post at the school will have undertaken safer recruitment training. This will cover, as a minimum, the contents of the Department for Education's statutory guidance, Keeping Children Safe in Education, and will be in line with local safeguarding procedures.

15.5 Staff who have contact with pupils and families

All staff who have contact with children and families will have supervisions which will provide them with support, coaching and training, promote the interests of children and allow for confidential discussions of sensitive issues.

16. Monitoring arrangements

This policy will be reviewed **annually** by Alison Nettleship Chief Executive Officer, Discovery MAT. At every review, it will be approved by the Board of Trustees.

17. Links with other policies

This policy links to the following policies and procedures:

Managing and Supporting Positive Behaviour Policy

Code of Conduct for School Staff

Complaints Policy and Procedure

Health and Safety Policy

Managing Attendance Policy

E-Safety Policy

Equality and Diversity Policy

Relationship and Sex Education Policy

Whistleblowing Policy

Anti-Bullying Policy

Curriculum

Designated teacher for looked-after and previously looked-after children

Privacy Notices

IT Acceptable Use

Safer Recruitment Policy

These appendices are based on the Department for Education's statutory guidance, Keeping Children Safe in Education.

Appendix I: types of abuse

Abuse, including neglect, and safeguarding issues are rarely standalone events that can be covered by one definition or label. In most cases, multiple issues will overlap.

Physical abuse may involve hitting, shaking, throwing, poisoning, burning or scalding, drowning, suffocating or otherwise causing physical harm to a child. Physical harm may also be caused when a parent or carer fabricates the symptoms of, or deliberately induces, illness in a child.

Emotional abuse is the persistent emotional maltreatment of a child such as to cause severe and adverse effects on the child's emotional development. Some level of emotional abuse is involved in all types of maltreatment of a child, although it may occur alone.

Emotional abuse may involve:

Conveying to a child that they are worthless or unloved, inadequate, or valued only insofar as they meet the needs of another person

Not giving the child opportunities to express their views, deliberately silencing them or 'making fun' of what they say or how they communicate

Age or developmentally inappropriate expectations being imposed on children. These may include interactions that are beyond a child's developmental capability, as well as overprotection and limitation of exploration and learning, or preventing the child participating in normal social interaction

Seeing or hearing the ill-treatment of another

Serious bullying (including cyberbullying), causing children frequently to feel frightened or in danger, or the exploitation or corruption of children

Sexual abuse involves forcing or enticing a child or young person to take part in sexual activities, not necessarily involving a high level of violence, whether or not the child is aware of what is happening. The activities may involve:

Physical contact, including assault by penetration (for example rape or oral sex) or non-penetrative acts such as masturbation, kissing, rubbing and touching outside of clothing

Non-contact activities, such as involving children in looking at, or in the production of, sexual images, watching sexual activities, encouraging children to behave in sexually inappropriate ways, or grooming a child in preparation for abuse (including via the internet)

Sexual abuse is not solely perpetrated by adult males. Women can also commit acts of sexual abuse, as can other children.

Neglect is the persistent failure to meet a child's basic physical and/or psychological needs, likely to result in the serious impairment of the child's health or development. Neglect may occur during pregnancy as a result of maternal substance abuse.

Once a child is born, neglect may involve a parent or carer failing to:

Provide adequate food, clothing and shelter (including exclusion from home or abandonment)

Protect a child from physical and emotional harm or danger

Ensure adequate supervision (including the use of inadequate care-givers)

Ensure access to appropriate medical care or treatment

It may also include neglect of, or unresponsiveness to, a child's basic emotional needs.

Appendix 2: safer recruitment and DBS checks – policy and procedures

We will record all information on the checks carried out in the school's single central record (SCR). Copies of these checks, where appropriate, will be held in individuals' personnel files. We follow requirements and best practice in retaining copies of these checks, as set out below.

To make sure we recruit suitable people, we will ensure that those involved in the recruitment and employment of staff to work with children have received appropriate safer recruitment training.

We have put the following steps in place during our recruitment and selection process to ensure we are committed to safeguarding and promoting the welfare of children.

Advertising

When advertising roles, we will make clear:

- Our school's commitment to safeguarding and promoting the welfare of children
- That safeguarding checks will be undertaken
- The safeguarding requirements and responsibilities of the role, such as the extent to which the role will involve contact with children
- Whether or not the role is exempt from the Rehabilitation of Offenders Act 1974 and the amendments to the Exceptions Order 1975, 2013 and 2020. If the role is exempt, certain spent convictions and cautions are 'protected', so they do not need to be disclosed, and if they are disclosed, we cannot take them into account

Application forms

Our application forms will:

- Include a statement saying that it is an offence to apply for the role if an applicant is barred from engaging in regulated activity relevant to children (where the role involves this type of regulated activity)
- Include a copy of, or link to, our child protection and safeguarding policy and our policy on the employment of ex-offenders

Shortlisting

Our shortlisting process will involve at least 2 people and will:

- Consider any inconsistencies and look for gaps in employment and reasons given for them
- Explore all potential concerns

Once we have shortlisted candidates, we will ask shortlisted candidates to:

- Complete a self-declaration of their criminal record or any information that would make them unsuitable to work with children, so that they have the opportunity to share relevant information and discuss it at interview stage. The information we will ask for includes:
 - If they have a criminal history
 - Whether they are included on the barred list
 - Whether they are prohibited from teaching
 - Information about any criminal offences committed in any country in line with the law as applicable in England and Wales
 - Any relevant overseas information
- Sign a declaration confirming the information they have provided is true

Seeking references and checking employment history

We will obtain references before interview. Any concerns raised will be explored further with referees and taken up with the candidate at interview.

When seeking references we will:

- Not accept open references
- Liaise directly with referees and verify any information contained within references with the referees
- Ensure any references are from the candidate's current employer and completed by a senior person. Where the referee is school based, we will ask for the reference to be confirmed by the headteacher/principal as accurate in respect to disciplinary investigations
- Obtain verification of the candidate's most recent relevant period of employment if they are not currently employed
- Secure a reference from the relevant employer from the last time the candidate worked with children if they are not currently working with children
- Compare the information on the application form with that in the reference and take up any inconsistencies with the candidate
- Resolve any concerns before any appointment is confirmed

Interview and selection

When interviewing candidates, we will:

- Probe any gaps in employment, or where the candidate has changed employment or location frequently, and ask candidates to explain this
- Explore any potential areas of concern to determine the candidate's suitability to work with children
- Record all information considered and decisions made

Pre-appointment vetting checks

We will record all information on the checks carried out in the school's single central record (SCR). Copies of these checks, where appropriate, will be held in individuals' personnel files. We follow requirements and best practice in retaining copies of these checks, as set out below.

New staff

When appointing new staff, we will:

Verify their identity

Obtain (via the applicant) an enhanced Disclosure and Barring Service (DBS) certificate, including barred list information for those who will be engaging in regulated activity (see definition below). We will not keep a copy of this for longer than 6 months

Obtain a separate barred list check if they will start work in regulated activity before the DBS certificate is available

Verify their mental and physical fitness to carry out their work responsibilities

Verify their right to work in the UK. We will keep a copy of this verification for the duration of the member of staff's employment and for 2 years afterwards

Verify their professional qualifications, as appropriate

Ensure they are not subject to a prohibition order if they are employed to be a teacher

Carry out further additional checks, as appropriate, on candidates who have lived or worked outside of the UK, including (where relevant) any teacher sanctions or restrictions imposed by a European Economic Area professional regulating authority, and criminal records checks or their equivalent

Check that candidates taking up a management position are not subject to a prohibition from management (section 128) direction made by the secretary of state

We will ensure that appropriate checks are carried out to ensure that individuals are not disqualified under the 2018 Childcare Disqualification Regulations and Childcare Act 2006. Where we take a decision that an individual falls outside of the scope of these regulations and we do not carry out such checks, we will retain a record of our assessment on the individual's personnel file. This will include our evaluation of any risks and control measures put in place, and any advice sought.

We will ask for written information about previous employment history and check that information is not contradictory or incomplete.

We will seek references on all short-listed candidates, including internal candidates, before interview. We will scrutinise these and resolve any concerns before confirming appointments. The references requested will ask specific questions about the suitability of the applicant to work with children.

Regulated activity means a person who will be:

Responsible, on a regular basis in a school or college, for teaching, training, instructing, caring for or supervising children; or

Carrying out paid, or unsupervised unpaid, work regularly in a school or college where that work provides an opportunity for contact with children; or

Engaging in intimate or personal care or overnight activity, even if this happens only once and regardless of whether they are supervised or not

Existing staff

If we have concerns about an existing member of staff's suitability to work with children, we will carry out all the relevant checks as if the individual was a new member of staff. We will also do this if an individual moves from a post that is not regulated activity to one that is.

We will refer to the DBS anyone who has harmed, or poses a risk of harm, to a child or vulnerable adult where:

We believe the individual has engaged in [relevant conduct](#); or

The individual has received a caution or conviction for a relevant offence, or there is reason to believe the individual has committed a listed relevant offence, under the [Safeguarding Vulnerable Groups Act 2006 \(Prescribed Criteria and Miscellaneous Provisions\) Regulations 2009](#); or

The 'harm test' is satisfied in respect of the individual (i.e. they may harm a child or vulnerable adult or put them at risk of harm); and

The individual has been removed from working in regulated activity (paid or unpaid) or would have been removed if they had not left

Agency and third-party staff

We will obtain written notification from any agency or third-party organisation that it has carried out the necessary safer recruitment checks that we would otherwise perform. We will also check that the person presenting themselves for work is the same person on whom the checks have been made.

Contractors

We will ensure that any contractor, or any employee of the contractor, who is to work at the school has had the appropriate level of DBS check (this includes contractors who are provided through a PFI or similar contract). This will be:

An enhanced DBS check with barred list information for contractors engaging in regulated activity

An enhanced DBS check, not including barred list information, for all other contractors who are not in regulated activity but whose work provides them with an opportunity for regular contact with children

We will obtain the DBS check for self-employed contractors.

We will not keep copies of such checks for longer than 6 months.

Contractors who have not had any checks will not be allowed to work unsupervised or engage in regulated activity under any circumstances.

We will check the identity of all contractors and their staff on arrival at the school.

For self-employed contractors such as music teachers or sports coaches, we will ensure that appropriate checks are carried out to ensure that individuals are not disqualified under the 2018 Childcare Disqualification Regulations and Childcare Act 2006. Where we decide that an individual falls outside of the scope of these regulations and we do not carry out such checks, we will retain a record of our assessment. This will include our evaluation of any risks and control measures put in place, and any advice sought.

Trainee/student teachers

Where applicants for initial teacher training are salaried by us, we will ensure that all necessary checks are carried out.

Where trainee teachers are fee-funded, we will obtain written confirmation from the training provider that necessary checks have been carried out and that the trainee has been judged by the provider to be suitable to work with children.

In both cases, this includes checks to ensure that individuals are not disqualified under the 2018 Childcare Disqualification Regulations and Childcare Act 2006.

Volunteers

We will:

Never leave an unchecked volunteer unsupervised or allow them to work in regulated activity

Obtain an enhanced DBS check with barred list information for all volunteers who are new to working in regulated activity

Carry out a risk assessment when deciding whether to seek an enhanced DBS check without barred list information for any volunteers not engaging in regulated activity. We will retain a record of this risk assessment

Ensure that appropriate checks are carried out to ensure that individuals are not disqualified under the 2018 Childcare Disqualification Regulations and Childcare Act 2006. Where we decide that an individual falls outside of the scope of these regulations and we do not carry out such checks, we will retain a record of our assessment. This will include our evaluation of any risks and control measures put in place, and any advice sought

Trustees

All Trustees will have an enhanced DBS check without barred list information.

They will have an enhanced DBS check with barred list information if working in regulated activity.

The chair of the board will have their DBS check countersigned by the secretary of state.

All proprietors, trustees, local governors and members will also have the following checks:

A section 128 check (to check prohibition on participation in management under [section 128 of the Education and Skills Act 2008](#)).

Identity

Right to work in the UK

Other checks deemed necessary if they have lived or worked outside the UK

Staff working in alternative provision settings

Where we place a pupil with an alternative provision provider, we obtain written confirmation from the provider that they have carried out the appropriate safeguarding checks on individuals working there that we would otherwise perform.

Adults who supervise pupils on work experience

When organising work experience, we will ensure that policies and procedures are in place to protect children from harm.

We will also consider whether it is necessary for barred list checks to be carried out on the individuals who supervise a pupil under 16 on work experience. This will depend on the specific circumstances of the work experience, including the nature of the supervision, the frequency of the activity being supervised, and whether the work is regulated activity.

Pupils staying with host families

Where the school makes arrangements for pupils to be provided with care and accommodation by a host family to which they are not related (for example, during a foreign exchange visit), we will request enhanced DBS checks with barred list information on those people.

Where the school is organising such hosting arrangements overseas and host families cannot be checked in the same way, we will work with our partner schools abroad to ensure that similar assurances are undertaken prior to the visit.

Appendix 3: safeguarding concerns allegations of abuse made against staff, supply teachers, volunteers and contractors.

This section of this policy applies to all cases in which it is alleged that a current member of staff, including a supply teacher or volunteer, has:

Behaved in a way that has harmed a child, or may have harmed a child, or

Possibly committed a criminal offence against or related to a child, or

Behaved towards a child or children in a way that indicates he or she may pose a risk of harm to children, or

Behaved or may have behaved in a way that indicates they may not be suitable to work with children

It applies regardless of whether the alleged abuse took place in the school. Allegations against a teacher who is no longer teaching and historical allegations of abuse will be referred to the police.

We will deal with any allegation of abuse against a member of staff or volunteer very quickly, in a fair and consistent way that provides effective child protection while also supporting the individual who is the subject of the allegation.

Our procedures for dealing with allegations will be applied with common sense and judgement.

Suspension of the accused until the case is resolved

Suspension will not be the default position, and will only be considered in cases where there is reason to suspect that a child or other children is/are at risk of harm, or the case is so serious that it might be grounds for dismissal. In such cases, we will only suspend an individual if we have considered all other options available and there is no reasonable alternative.

Based on an assessment of risk, we will consider alternatives such as:

Redeployment within the school so that the individual does not have direct contact with the child or children concerned

Providing an assistant to be present when the individual has contact with children

Redeploying the individual to alternative work in the school so that they do not have unsupervised access to children

Moving the child or children to classes where they will not come into contact with the individual, making it clear that this is not a punishment and parents have been consulted

Temporarily redeploying the individual to another role in a different location, for example to an alternative school or other work for the MAT

Definitions for outcomes of allegation investigations

Substantiated: there is sufficient evidence to prove the allegation

Malicious: there is sufficient evidence to disprove the allegation and there has been a deliberate act to deceive

False: there is sufficient evidence to disprove the allegation

Unsubstantiated: there is insufficient evidence to either prove or disprove the allegation (this does not imply guilt or innocence)

Unfounded: to reflect cases where there is no evidence or proper basis which supports the allegation being made

Procedure for dealing with allegations

In the event of an allegation that meets the criteria above, the Head of School/Senior Head of School (or Chair of Trustees) where the Head of School/Senior Head of School is the subject of the allegation) – the ‘case manager’ – will take the following steps:

Immediately discuss the allegation with the designated officer at the local authority. This is to consider the nature, content and context of the allegation and agree a course of action, including whether further enquiries are necessary to enable a decision on how to proceed, and whether it is necessary to involve the police and/or children’s social care services. (The case manager may, on occasion, consider it necessary to involve the police *before* consulting the designated officer – for example, if the accused individual is deemed to be an immediate risk to children or there is evidence of a possible criminal offence. In such cases, the case manager will notify the designated officer as soon as practicably possible after contacting the police)

Inform the accused individual of the concerns or allegations and likely course of action as soon as possible after speaking to the designated officer (and the police or children’s social care services, where necessary). Where the police and/or children’s social care services are involved, the case manager will only share such information with the individual as has been agreed with those agencies

Where appropriate (in the circumstances described above), carefully consider whether suspension of the individual from contact with children at the school is justified or whether alternative arrangements such as those outlined above can be put in place. Advice will be sought from the designated officer, police and/or children’s social care services, as appropriate

If immediate suspension is considered necessary, agree and record the rationale for this with the designated officer. The record will include information about the alternatives to suspension that have been considered, and why they were rejected. Written confirmation of the suspension will be provided to the individual facing the allegation or concern within 1 working day, and the individual will be given a named contact at the school and their contact details

If it is decided that no further action is to be taken in regard to the subject of the allegation or concern, record this decision and the justification for it and agree with the designated officer what information should be put in writing to the individual and by whom, as well as what action should follow both in respect of the individual and those who made the initial allegation

If it is decided that further action is needed, take steps as agreed with the designated officer to initiate the appropriate action in school and/or liaise with the police and/or children’s social care services as appropriate

Provide effective support for the individual facing the allegation or concern, including appointing a named representative to keep them informed of the progress of the case and considering what other support is appropriate. If the accused person is a member of a union or professional association s/he will be advised to contact that organisation at the outset for support. The MAT will also put them in contact with the provider of counselling/welfare support to the organisation and provide a copy of the leaflet ‘Guidance for an adult facing an allegation of child abuse at work’ written and developed by the LADO / PLP to explain the allegations management process in more detail.

Inform the parents or carers of the child/children involved about the allegation as soon as possible if they do not already know (following agreement with children’s social care services and/or the police, if applicable). The case manager will also inform the parents or carers of the requirement to maintain confidentiality about any allegations made against teachers (where this applies) while investigations are ongoing. Any parent or carer who wishes to have the confidentiality restrictions removed in respect of a teacher will be advised to seek legal advice

Keep the parents or carers of the child/children involved informed of the progress of the case and the outcome, where there is not a criminal prosecution, including the outcome of any disciplinary process (in confidence)

Make a referral to the DBS where it is thought that the individual facing the allegation or concern has engaged in conduct that harmed or is likely to harm a child, or if the individual otherwise poses a risk of harm to a child

We will inform Ofsted of any allegations of serious harm or abuse by any person living, working, or looking after children at the premises (whether the allegations relate to harm or abuse committed on the premises or elsewhere), and any action taken in respect of the allegations. This notification will be made as soon as reasonably possible and always within 14 days of the allegations being made.

If the school is made aware that the secretary of state has made an interim prohibition order in respect of an individual, we will immediately suspend that individual from teaching, pending the findings of the investigation by the Teaching Regulation Agency.

Where the police are involved, wherever possible the MAT will ask the police at the start of the investigation to obtain consent from the individuals involved to share their statements and evidence for use in the school's disciplinary process, should this be required at a later point.

Additional considerations for supply staff

If there are concerns or an allegation is made against someone not directly employed by the school, such as supply staff provided by an agency, we will take the actions below in addition to our standard procedures.

We will not decide to stop using a supply teacher due to safeguarding concerns without finding out the facts and liaising with our local authority designated officer to determine a suitable outcome

The governing board will discuss with the agency whether it is appropriate to suspend the supply teacher, or redeploy them to another part of the school, while the school carries out the investigation

We will involve the agency fully, but the school will take the lead in collecting the necessary information and providing it to the local authority designated officer as required

We will address issues such as information sharing, to ensure any previous concerns or allegations known to the agency are taken into account (we will do this, for example, as part of the allegations management meeting or by liaising directly with the agency where necessary)

When using an agency, we will inform them of our process for managing allegations, and keep them updated about our policies as necessary, and will invite the agency's HR manager or equivalent to meetings as appropriate.

Timescales

- Any cases where it is clear immediately that the allegation is unsubstantiated or malicious will be resolved within 1 week
- If the nature of an allegation does not require formal disciplinary action, we will institute appropriate action within 3 working days
- If a disciplinary hearing is required and can be held without further investigation, we will hold this within 15 working days

Specific actions

Action following a criminal investigation or prosecution

The case manager will discuss with the local authority's designated officer whether any further action, including disciplinary action, is appropriate and, if so, how to proceed, taking into account information provided by the police and/or children's social care services.

Conclusion of a case where the allegation is substantiated

If the allegation is substantiated and the individual is dismissed or the school ceases to use their services, or the individual resigns or otherwise ceases to provide their services, the case manager and the school's personnel adviser will discuss with the designated officer whether to make a referral to the DBS for consideration of whether inclusion on the barred lists is required. If they think that the individual has engaged in conduct that has harmed (or is likely to harm) a child, or if they think the person otherwise poses a risk of harm to a child, they must make a referral to the DBS.

If the individual concerned is a member of teaching staff, the case manager and personnel adviser will discuss with the designated officer whether to refer the matter to the Teaching Regulation Agency to consider prohibiting the individual from teaching.

Individuals returning to work after suspension

If it is decided on the conclusion of a case that an individual who has been suspended can return to work, the case manager will consider how best to facilitate this.

The case manager will also consider how best to manage the individual's contact with the child or children who made the allegation, if they are still attending the school.

Unsubstantiated or malicious allegations

If an allegation is shown to be deliberately invented, or malicious, the Head of School/Senior Head of School, or other appropriate person in the case of an allegation against the Head of School/Senior Head of School, will consider whether any disciplinary action is appropriate against the pupil(s) who made it, or whether the police should be asked to consider whether action against those who made the allegation might be appropriate, even if they are not a pupil.

Confidentiality

The school will make every effort to maintain confidentiality and guard against unwanted publicity while an allegation is being investigated or considered.

The case manager will take advice from the local authority's designated officer, police and children's social care services, as appropriate, to agree:

- Who needs to know about the allegation and what information can be shared
- How to manage speculation, leaks and gossip, including how to make parents or carers of a child/children involved aware of their obligations with respect to confidentiality
- What, if any, information can be reasonably given to the wider community to reduce speculation
- How to manage press interest if, and when, it arises

Record-keeping

The case manager will maintain clear records about any case where the allegation or concern meets the criteria above and store them on the individual's confidential personnel file for the duration of the case. Such records will include:

- A clear and comprehensive summary of the allegation
- Details of how the allegation was followed up and resolved
- Notes of any action taken and decisions reached (and justification for these, as stated above)

If an allegation or concern is not found to have been malicious, the school will retain the records of the case on the individual's confidential personnel file, and provide a copy to the individual.

Where records contain information about allegations of sexual abuse, we will preserve these for the Independent Inquiry into Child Sexual Abuse (IICSA), for the term of the inquiry. We will retain all other records at least until the individual has reached normal pension age, or for 10 years from the date of the allegation if that is longer.

The records of any allegation that is found to be malicious will be deleted from the individual's personnel file.

References

When providing employer references, we will not refer to any allegation that has been proven to be false, unsubstantiated or malicious, or any history of allegations where all such allegations have been proven to be false, unsubstantiated or malicious.

Learning lessons

After any cases where the allegations are *substantiated*, we will review the circumstances of the case with the local authority's designated officer to determine whether there are any improvements that we can make to the school's procedures or practice to help prevent similar events in the future.

This will include consideration of (as applicable):

- Issues arising from the decision to suspend the member of staff
- The duration of the suspension
- Whether or not the suspension was justified
- The use of suspension when the individual is subsequently reinstated. We will consider how future investigations of a similar nature could be carried out without suspending the individual

Appendix 4: specific safeguarding issues

Children missing from education

A child going missing from education, particularly repeatedly, can be a warning sign of a range of safeguarding issues. This might include abuse or neglect, such as sexual abuse or exploitation or child criminal exploitation, or issues such as mental health problems, substance abuse, radicalisation, FGM or forced marriage.

There are many circumstances where a child may become missing from education, but some children are particularly at risk. These include children who:

- Are at risk of harm or neglect
- Are at risk of forced marriage or FGM
- Come from Gypsy, Roma, or Traveller families
- Come from the families of service personnel
- Go missing or run away from home or care
- Are supervised by the youth justice system
- Cease to attend a school
- Come from new migrant families

We will follow our procedures for unauthorised absence and for dealing with children who go missing from education, particularly on repeat occasions, to help identify the risk of abuse and neglect, including sexual exploitation, and to help prevent the risks of going missing in future. This includes informing the local authority if a child leaves the school without a new school being named, and adhering to requirements with respect to sharing information with the local authority, when applicable, when removing a child's name from the admission register at non-standard transition points.

Staff will be trained in signs to look out for and the individual triggers to be aware of when considering the risks of potential safeguarding concerns which may be related to being missing, such as travelling to conflict zones, FGM and forced marriage.

If a staff member suspects that a child is suffering from harm or neglect, we will follow local child protection procedures, including with respect to making reasonable enquiries. We will make an immediate referral to the local authority children's social care team, and the police, if the child is suffering or likely to suffer from harm, or in immediate danger.

The Trust follows the 'Children Missing Education' (CME) Policy for Plymouth which sets out the joint responsibilities of all agencies, all staff in schools, the Local Authority and the Plymouth Safeguarding Children Board in ensuring that all children and young people have the opportunity to access appropriate and suitable education provision. This CME policy document has been developed in accordance with the provisions of the 'Children Missing Education' Statutory Guidance (September 2016) for unauthorised absence and for dealing with children that go missing from education, particularly on repeat occasions. This will help identify the risk of abuse and neglect, including sexual exploitation, and to help prevent the risks of going missing in the future.

Child criminal exploitation

Child criminal exploitation (CCE) is a form of abuse where an individual or group takes advantage of an imbalance of power to coerce, control, manipulate or deceive a child into criminal activity, in exchange for something the victim needs or wants, and/or for the financial or other advantage of the perpetrator or facilitator, and/or through violence or the threat of violence.

The abuse can be perpetrated by males or females, and children or adults. It can be a one-off occurrence or a series of incidents over time, and range from opportunistic to complex organised abuse.

The victim can be exploited even when the activity appears to be consensual. It does not always involve physical contact and can happen online. For example, young people may be forced to work in cannabis factories, coerced into moving drugs or money across the country (county lines), forced to shoplift or pickpocket, or to threaten other young people.

Indicators of CCE can include a child:

Appearing with unexplained gifts or new possessions

Associating with other young people involved in exploitation

Suffering from changes in emotional wellbeing

Misusing drugs and alcohol

Going missing for periods of time or regularly coming home late

Regularly missing school or education

Not taking part in education

If a member of staff suspects CCE, they will discuss this with the DSL. The DSL will trigger the local safeguarding procedures, including a referral to the local authority's children's social care team and the police, if appropriate.

In relation to Child Q (outside agency involvement)

If a child is asked to meet with a member of staff from an outside agency (Police, Social Care etc) it is important that normal safeguarding procedures are followed. Where possible a familiar adult from the school should be present. If at any point a member of the team is not happy with what is happening then they should have the confidence to challenge in order to prioritise the child's needs.

Child sexual exploitation

Child sexual exploitation (CSE) is a form of abuse where an individual or group takes advantage of an imbalance of power to coerce, manipulate or deceive a child into sexual activity, in exchange for something the victim needs or wants and/or for the financial advantage or increased status of the perpetrator or facilitator. It may, or may not, be accompanied by violence or threats of violence.

The abuse can be perpetrated by males or females, and children or adults. It can be a one-off occurrence or a series of incidents over time, and range from opportunistic to complex organised abuse.

The victim can be exploited even when the activity appears to be consensual. Children or young people who are being sexually exploited may not understand that they are being abused. They often trust their abuser and may be tricked into believing they are in a loving, consensual relationship.

CSE can include both physical contact (penetrative and non-penetrative acts) and non-contact sexual activity. It can also happen online. For example, young people may be persuaded or forced to share sexually explicit images of themselves, have sexual conversations by text, or take part in sexual activities using a webcam. CSE may also occur without the victim's immediate knowledge, for example through others copying videos or images.

In addition to the CCE indicators above, indicators of CSE can include a child:

Having an older boyfriend or girlfriend

Suffering from sexually transmitted infections or becoming pregnant

If a member of staff suspects CSE, they will discuss this with the DSL. The DSL will trigger the local safeguarding procedures, including a referral to the local authority's children's social care team and the police, if appropriate.

Domestic abuse

Children can witness and be adversely affected by domestic abuse and/or violence at home where it occurs between family members thus making them victims of domestic abuse. Domestic abuse can be physical, sexual, financial, psychological or emotional and can include the ill treatment of others. In some cases, a child may blame themselves for the abuse or may have had to leave the family home as a result.

Exposure to domestic abuse and/or violence can have a serious, long-lasting emotional and psychological impact on children.

Children can be victims, and perpetrators, in their own relationships too.

If police are called to an incident of domestic abuse and any children in the household have experienced the incident, the police will inform the key adult in school (usually the designated safeguarding lead) before the child or children arrive at school the following day. Our schools link to Operation Encompass and communication will come through this process.

The DSL will provide support according to the child's needs and update records about their circumstances.

Homelessness

Being homeless or being at risk of becoming homeless presents a real risk to a child's welfare.

The DSL and deputy will be aware of contact details and referral routes in to the local housing authority so they can raise/progress concerns at the earliest opportunity (where appropriate and in accordance with local procedures).

Where a child has been harmed or is at risk of harm, the DSL will also make a referral to children's social care.

So-called 'honour-based' abuse (including FGM and forced marriage)

So-called 'honour-based' abuse (HBA) encompasses incidents or crimes committed to protect or defend the honour of the family and/or community, including FGM, forced marriage, and practices such as breast ironing.

Abuse committed in this context often involves a wider network of family or community pressure and can include multiple perpetrators.

All forms of HBA are abuse and will be handled and escalated as such. All staff will be alert to the possibility of a child being at risk of HBA or already having suffered it. If staff have a concern, they will speak to the DSL, who will activate local safeguarding procedures.

FGM

The DSL will make sure that staff have access to appropriate training to equip them to be alert to children affected by FGM or at risk of FGM.

Section 7.3 of this policy sets out the procedures to be followed if a staff member discovers that an act of FGM appears to have been carried out or suspects that a pupil is at risk of FGM.

Indicators that FGM has already occurred include:

- A pupil confiding in a professional that FGM has taken place
- A mother/family member disclosing that FGM has been carried out
- A family/pupil already being known to social services in relation to other safeguarding issues

➤ A girl:

- Having difficulty walking, sitting or standing, or looking uncomfortable
- Finding it hard to sit still for long periods of time (where this was not a problem previously)
- Spending longer than normal in the bathroom or toilet due to difficulties urinating
- Having frequent urinary, menstrual or stomach problems
- Avoiding physical exercise or missing PE
- Being repeatedly absent from school, or absent for a prolonged period
- Demonstrating increased emotional and psychological needs – for example, withdrawal or depression, or significant change in behaviour
- Being reluctant to undergo any medical examinations
- Asking for help, but not being explicit about the problem
- Talking about pain or discomfort between her legs

Potential signs that a pupil may be at risk of FGM include:

- The girl's family having a history of practising FGM (this is the biggest risk factor to consider)
- FGM being known to be practised in the girl's community or country of origin
- A parent or family member expressing concern that FGM may be carried out
- A family not engaging with professionals (health, education or other) or already being known to social care in relation to other safeguarding issues

➤ A girl:

- Having a mother, older sibling or cousin who has undergone FGM
- Having limited level of integration within UK society
- Confiding to a professional that she is to have a "special procedure" or to attend a special occasion to "become a woman"
- Talking about a long holiday to her country of origin or another country where the practice is prevalent, or parents stating that they or a relative will take the girl out of the country for a prolonged period
- Requesting help from a teacher or another adult because she is aware or suspects that she is at immediate risk of FGM
- Talking about FGM in conversation – for example, a girl may tell other children about it (although it is important to take into account the context of the discussion)
- Being unexpectedly absent from school
- Having sections missing from her 'red book' (child health record) and/or attending a travel clinic or equivalent for vaccinations/anti-malarial medication

The above indicators and risk factors are not intended to be exhaustive.

Forced marriage

Forcing a person into marriage is a crime. A forced marriage is one entered into without the full and free consent of one or both parties and where violence, threats, or any other form of coercion is used to cause a person to enter into a marriage. Threats can be physical or emotional and psychological.

Staff will receive training around forced marriage and the presenting symptoms. We are aware of the 'one chance' rule, i.e. we may only have one chance to speak to the potential victim and only one chance to save them.

If a member of staff suspects that a pupil is being forced into marriage, they will speak to the pupil about their concerns in a secure and private place. They will then report this to the DSL.

The DSL will:

- Speak to the pupil about the concerns in a secure and private place
- Activate the local safeguarding procedures and refer the case to the local authority's designated officer
- Seek advice from the Forced Marriage Unit on 020 7008 0151 or fm@fco.gov.uk
- Refer the pupil to an education welfare officer, pastoral tutor, learning mentor, or school counsellor, as appropriate

Preventing radicalisation

Radicalisation refers to the process by which a person comes to support terrorism and extremist ideologies associated with terrorist groups

Extremism is vocal or active opposition to fundamental British values, such as democracy, the rule of law, individual liberty, and mutual respect and tolerance of different faiths and beliefs. This also includes calling for the death of members of the armed forces

Terrorism is an action that:

- Endangers or causes serious violence to a person/people;
- Causes serious damage to property; or
- Seriously interferes or disrupts an electronic system

The use or threat of terrorism must be designed to influence the government or to intimidate the public and is made for the purpose of advancing a political, religious or ideological cause.

Schools have a duty to prevent children from being drawn into terrorism. The DSL will undertake Prevent awareness training and make sure that staff have access to appropriate training to equip them to identify children at risk.

We will assess the risk of children in our school being drawn into terrorism. This assessment will be based on an understanding of the potential risk in our local area, in collaboration with our local safeguarding partners and local police force.

We will ensure that suitable internet filtering is in place, and equip our pupils to stay safe online at school and at home.

There is no single way of identifying an individual who is likely to be susceptible to an extremist ideology. Radicalisation can occur quickly or over a long period.

Staff will be alert to changes in pupils' behaviour.

The government website [Educate Against Hate](#) and charity [NSPCC](#) say that signs that a pupil is being radicalised can include:

- Refusal to engage with, or becoming abusive to, children who are different from themselves
- Becoming susceptible to conspiracy theories and feelings of persecution
- Changes in friendship groups and appearance
- Rejecting activities they used to enjoy

- Converting to a new religion
- Isolating themselves from family and friends
- Talking as if from a scripted speech
- An unwillingness or inability to discuss their views
- A sudden disrespectful attitude towards others
- Increased levels of anger
- Increased secretiveness, especially around internet use
- Expressions of sympathy for extremist ideologies and groups, or justification of their actions
- Accessing extremist material online, including on Facebook or Twitter
- Possessing extremist literature
- Being in contact with extremist recruiters and joining, or seeking to join, extremist organisations

Children who are at risk of radicalisation may have low self-esteem, or be victims of bullying or discrimination. It is important to note that these signs can also be part of normal teenage behaviour – staff should have confidence in their instincts and seek advice if something feels wrong.

If staff are concerned about a pupil, they will follow our procedures set out in section 7.5 of this policy, including discussing their concerns with the DSL.

Staff should **always** take action if they are worried.

Further information on the school's measures to prevent radicalisation are set out in other school policies and procedures, including the Trust's Managing and Supporting Positive Behaviour and the E-Safety Policy.

Child-on-child abuse

Child-on-child abuse is when children abuse other children. This type of abuse can take place inside and outside of school and online.

Children with SEND are 3x more likely to be abused. The age and stage of the child's development are critical factors.

Child-on-child abuse is most likely to include, but may not be limited to:

- Bullying (including cyber-bullying, prejudice-based and discriminatory bullying)
- Abuse in intimate personal relationships between children
- Physical abuse such as hitting, kicking, shaking, biting, hair pulling, or otherwise causing physical harm (this may include an online element which facilitates, threatens and/or encourages physical abuse)
- Sexual violence, such as rape, assault by penetration and sexual assault (this may include an online element which facilitates, threatens and/or encourages sexual violence)
- Sexual harassment, such as sexual comments, remarks, jokes and online sexual harassment, which may be standalone or part of a broader pattern of abuse
- Causing someone to engage in sexual activity without consent, such as forcing someone to strip, touch themselves sexually, or to engage in sexual activity with a third party
- Consensual and non-consensual sharing of nudes and semi nudes images and/or videos (also known as sexting or youth produced sexual imagery)
- Upskirting, which typically involves taking a picture under a person's clothing without their permission, with the intention of viewing their genitals or buttocks to obtain sexual gratification, or cause the victim humiliation, distress or alarm

- Initiation/hazing type violence and rituals (this could include activities involving harassment, abuse or humiliation used as a way of initiating a person into a group and may also include an online element)

Where children abuse their child online, this can take the form of, for example, abusive, harassing, and misogynistic messages; the non-consensual sharing of indecent images, especially around chat groups; and the sharing of abusive images and pornography, to those who don't want to receive such content.

If staff have any concerns about child-on-child abuse, or a child makes a report to them, they will follow the procedures set out in section 7 of this policy, as appropriate. In particular, section 7.8 and 7.9 set out more detail about our school's approach to this type of abuse.

There is a **zero tolerance** approach to sexual violence, harassment and physical behaviour (grabbing bottoms, pulling down trousers).

Sexual violence and sexual harassment between children in schools

Sexual violence and sexual harassment can occur:

- Between 2 children of any age and sex
- Through a group of children sexually assaulting or sexually harassing a single child or group of children
- Online and face to face (both physically and verbally)

Sexual violence and sexual harassment exist on a continuum and may overlap.

Children who are victims (this term should be carefully considered and staff should endeavor to use the term the child feels most confident with) of sexual violence and sexual harassment will likely find the experience stressful and distressing. This will, in all likelihood, adversely affect their educational attainment and will be exacerbated if the alleged perpetrator(s) (staff should be mindful when using terms such as perpetrator in front of children) attends the same school.

If a victim reports an incident, it is essential that staff make sure they are reassured that they are being taken seriously and that they will be supported and kept safe. A victim should never be given the impression that they are creating a problem by reporting sexual violence or sexual harassment. Nor should a victim ever be made to feel ashamed for making a report. Children displaying harmful sexualised behaviour have often experienced their own abuse and trauma and it is important that they are offered appropriate support.

* Parents/carers of victim and perpetrator should be informed unless this puts the child at greater risk.

* A referral should be made to social care.

* Police should be informed if there is a report of rape, assault by penetration or sexual assault is made. However, it is important to reference that the law is there to protect not criminalise.

Some groups are potentially more at risk. Evidence shows that girls, children with SEN and/or disabilities, and lesbian, gay, bisexual and transgender (LGBT) children are at greater risk.

Staff should be aware of the importance of:

- Challenging inappropriate behaviours
- Making clear that sexual violence and sexual harassment is not acceptable, will never be tolerated and is not an inevitable part of growing up
- Challenging physical behaviours (potentially criminal in nature), such as grabbing bottoms, breasts and genitalia, pulling down trousers, flicking bras and lifting up skirts. Dismissing or tolerating such behaviours risks normalising them

If staff have any concerns about sexual violence or sexual harassment, or a child makes a report to them, they will follow the procedures set out in section 7 of this policy, as appropriate. In particular, section 7.8 and 7.9 set out more detail about our school's approach to this type of abuse.

Serious violence

Indicators which may signal that a child is at risk from, or involved with, serious violent crime may include:

- Increased absence from school
- Change in friendships or relationships with older individuals or groups
- Significant decline in performance
- Signs of self-harm or a significant change in wellbeing
- Signs of assault or unexplained injuries
- Unexplained gifts or new possessions (this could indicate that the child has been approached by, or is involved with, individuals associated with criminal networks or gangs and may be at risk of criminal exploitation (see above))

Risk factors which increase the likelihood of involvement in serious violence include:

- Being male
- Having been frequently absent or permanently excluded from school
- Having experienced child maltreatment
- Having been involved in offending, such as theft or robbery

Staff will be aware of these indicators and risk factors. If a member of staff has a concern about a pupil being involved in, or at risk of, serious violence, they will report this to the DSL.

Checking the identity and suitability of visitors

All visitors will be required to verify their identity to the satisfaction of staff and to leave their belongings, including their mobile phone(s), in a safe place during their visit.

If the visitor is unknown to the setting, we will check their credentials and reason for visiting before allowing them to enter the setting. Visitors should be ready to produce identification.

Visitors are expected to sign the visitors' book and wear a visitor's badge.

Visitors to the school who are visiting for a professional purpose, such as educational psychologists and school improvement officers, will be asked to show photo ID and:

- Will be asked to show their DBS certificate, which will be checked alongside their photo ID; or
- The organisation sending the professional, such as the LA or educational psychology service, will provide prior written confirmation that an enhanced DBS check with barred list information has been carried out

All other visitors, including visiting speakers, will be accompanied by a member of staff at all times. We will not invite into the school any speaker who is known to disseminate extremist views, and will carry out appropriate checks to ensure that any individual or organisation using school facilities is not seeking to disseminate extremist views or radicalise pupils or staff.

Further information regarding visitors can be found in the Trust's 'Visitor Protocol'.

Non-collection of children

If a child is not collected at the end of the session/day, we will contact those adults on the pupils contact list and a member of senior staff will wait with the pupil concerned. Advice will be taken from the CEO as to whether contact with other agencies is necessary.

Missing pupils

Our procedures are designed to ensure that a missing child is found and returned to effective supervision as soon as possible. If a child goes missing, we will:

Following receipt of the electronic register, the administrator will identify those children who have not arrived in time for registration (given a 'U' mark on the register).

For the pupil concerned, the school office shall make phone calls to parents and carers to identify the child's whereabouts and/or confirm a reason for absence. If the office is unable to make contact with the pupil concerned, the office will notify an area of the senior leadership team promptly, and give the pupil a 'U' mark until reason for absence is obtained, or the pupil arrives at school. Admin staff should make appropriate notes using the 'Note' function on SIMS.

In some cases, in the interests of safeguarding, it may be necessary for a member of the Senior Leadership Team to make a visit to a pupil's home to confirm their whereabouts, if particular concerns have been raised.

Further information regarding missing pupils is available in the Trust's 'Missing Pupil Policy'.